

# PRODUKTÜBERSICHT

## *PRODUCT OVERVIEW*

**Hirt-Line®**

**Großes System 1/2 Zoll**  
**(Durchlass 11 mm)**

**Big System 1/2 Inch**  
**(Outlet 11 mm)**



## Gesamtübersicht / Overview Typ 2 System 1/2"

### Maschinenadapter / Machine Adapter



2-AD-12



2-AD-12-PT



2-AD-12-U



2-AD-34



2-AD-34-PT



2-AD-34-U



2-AD-38



2-AD-38-PT



2-AD-38-U

### Grundelemente / Basic Elements



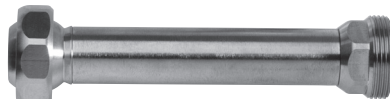
2-GE



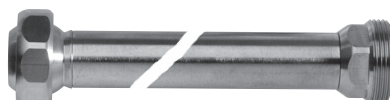
2-GE-2



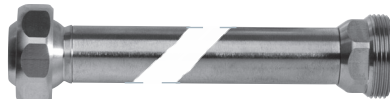
2-GE-3



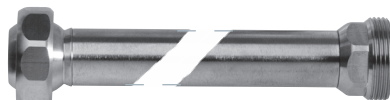
2-GE-100



2-GE-300



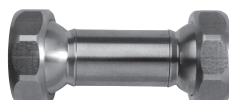
2-GE-500



2-GE-1000



2-GE-DK



2-GE-2-DK



2-GE-3-DK



2-GE-3-DKS

### Winklelemente / Elbows



2-WI



2-WV-1K



2-WV-2K



2-WV-3K



2-WV-4K



2-YV

### Düsen / Nozzles



2-DU-10



2-DU-12



2-DU-65



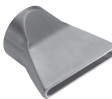
2-DU-SL-25



2-DU-SL-25-GS



2-DU-SL-25-SS



2-DU-SL-50



2-DU-SL-50-GS



2-DU-SL-65-GS



2-DU-SL-76-GS



KU-2-DU-10

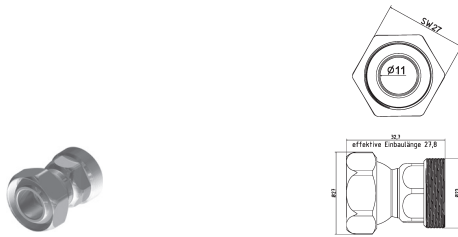


KU-2-DU-12



KU-2-DU-65

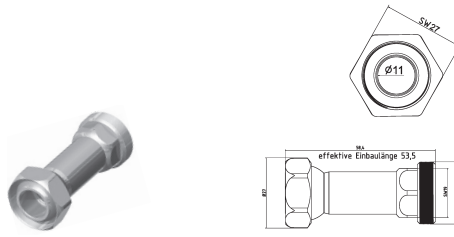
## Grundelemente / Basic Elements



### 2-GE

$l = 32,7$  mm effektiv  $l = 27,8$  mm

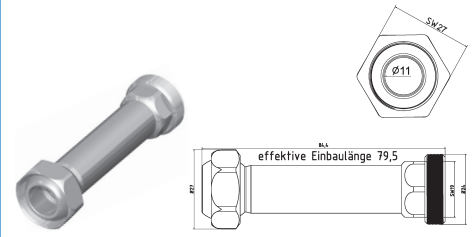
$l = 32,7$  mm effective  $l = 27,8$  mm



### 2-GE-2

$l = 58,4$  mm effektiv  $l = 53,5$  mm

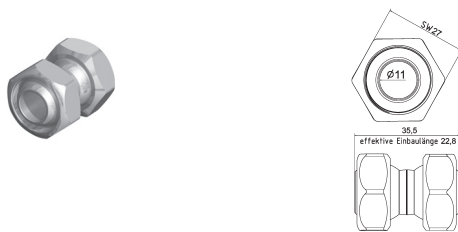
$l = 58,4$  mm effective  $l = 53,5$  mm



### 2-GE-3

$l = 84,4$  mm effektiv  $l = 79,5$  mm

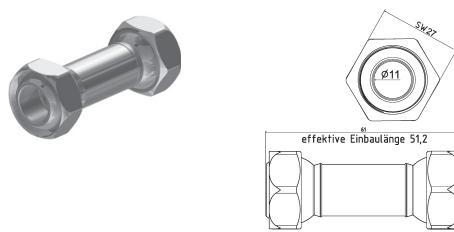
$l = 84,4$  mm effective  $l = 79,5$  mm



### 2-GE-DK

$l = 35,5$  mm effektiv  $l = 22,8$  mm Doppelkugel

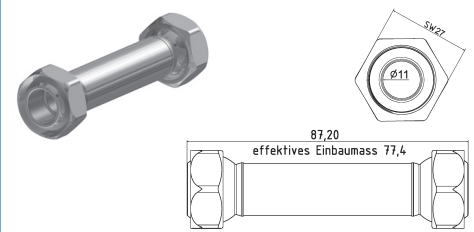
$l = 35,5$  mm effective  $l = 22,8$  mm double ball



### 2-GE-2-DK

$l = 61$  mm effektiv  $l = 51,2$  mm Doppelkugel

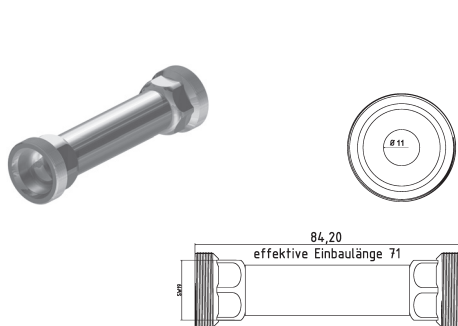
$l = 61$  mm effective  $l = 51,2$  mm double ball



### 2-GE-3-DK

$l = 87,2$  mm effektiv  $l = 77,4$  mm Doppelkugel

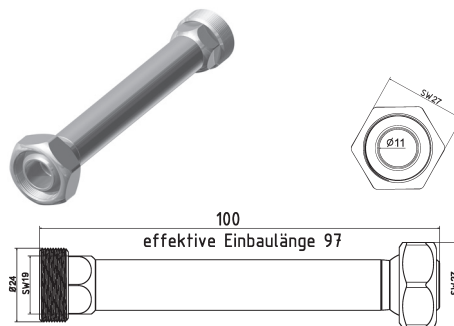
$l = 87,2$  mm effective  $l = 77,4$  mm double ball



### 2-GE-3-DKS

$l = 84,2$  effektiv  $l = 71$  mm Doppelkalottenstück

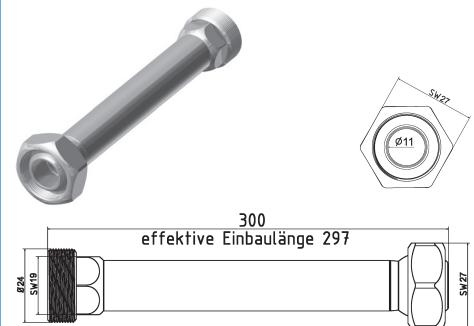
$l = 84,2$  effective  $l = 71$  mm double cap piece



### 2-GE-100

$l = 100$  mm effektiv  $l = 97$  mm

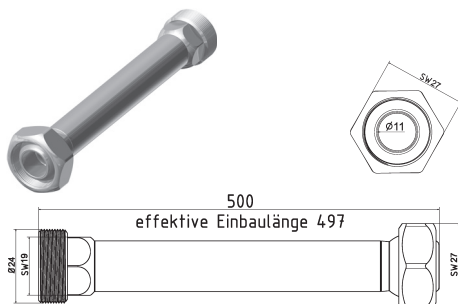
$l = 100$  mm effective  $l = 97$  mm



### 2-GE-300

$l = 300$  mm effektiv  $l = 297$  mm

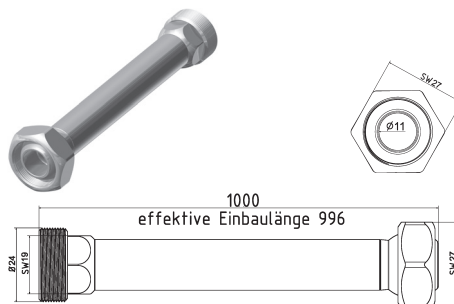
$l = 300$  mm effective  $l = 297$  mm



### 2-GE-500

$l = 500$  mm effektiv  $l = 497$  mm

$l = 500$  mm effective  $l = 497$  mm

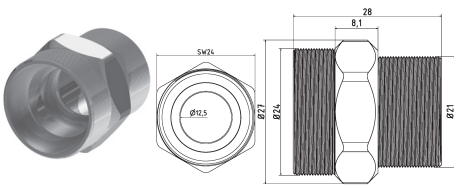


### 2-GE-1000

$l = 1000$  mm effektiv  $l = 996$  mm

$l = 1000$  mm effective  $l = 996$  mm

## Maschinenadapter / Machine Adapter



### 2-AD-12

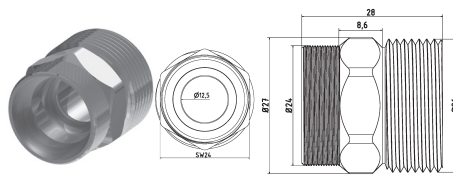
Adapterstück G 1/2"  
adaptor piece thread 1/2"

### 2-AD-12-PT

Adapterstück G 1/2" PT (Withworth-Gewinde)  
adaptor piece thread 1/2" PT (NPT thread)

### 2-AD-12-U

Adapterstück G 1/2" U  
(Gewinde unterschritten)  
adaptor piece thread 1/2" U  
(Undercut thread)



### 2-AD-34

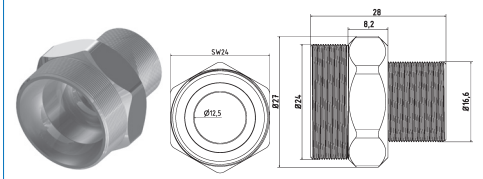
Adapterstück G 3/4"  
adaptor piece thread 3/4"

### 2-AD-34-PT

Adapterstück G 3/4" PT (Withworth-Gewinde)  
adaptor piece thread 3/4" PT (NPT thread)

### 2-AD-34-U

Adapterstück G 3/4" U  
(Gewinde unterschritten)  
adaptor piece thread 3/4" U  
(Undercut thread)



### 2-AD-38

Adapterstück G 3/8"  
adaptor piece thread 3/8"

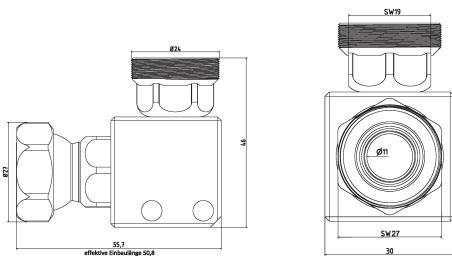
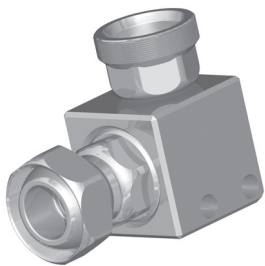
### 2-AD-38-PT

Adapterstück G 3/8" PT (Withworth-Gewinde)  
adaptor piece thread 3/8" PT (NPT thread)

### 2-AD-38-U

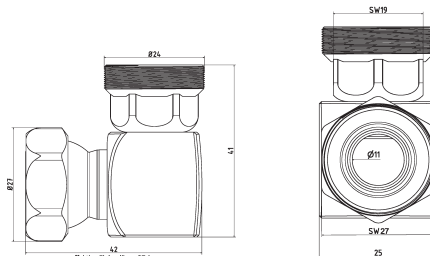
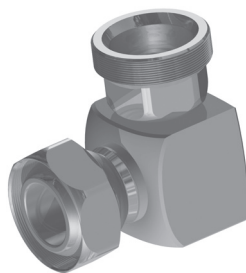
Adapterstück G 3/8" U  
(Gewinde unterschritten)  
adaptor piece thread 3/8" U  
(Undercut thread)

## Winkelelemente / Elbows



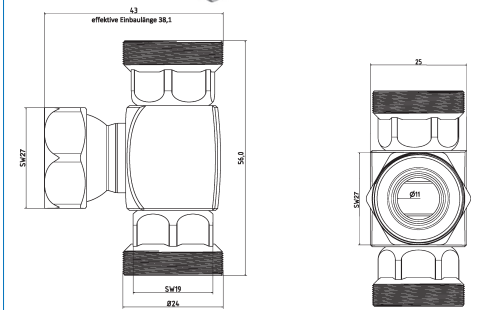
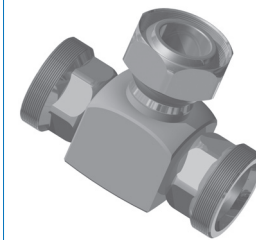
### 2-WI

Winkelstück für Leitungen mit 2 Bohrungen  
corner piece for pipelines with 2 bore hole



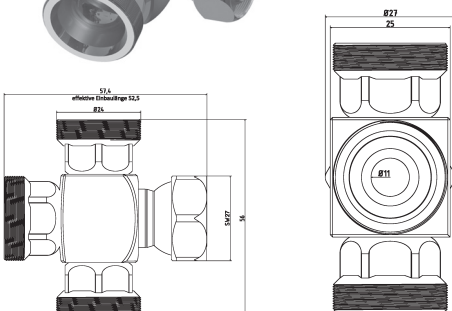
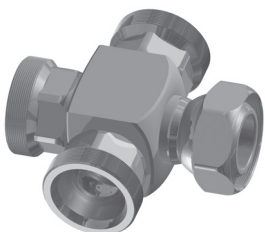
### 2-WV-1K

Winkelstück  
elbow piece



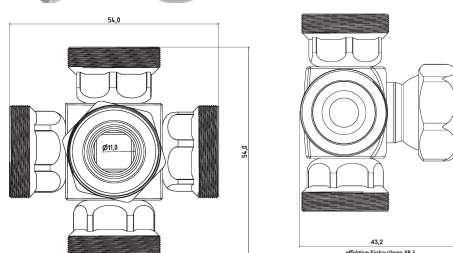
### 2-WV-2K

T-Stück  
T-piece



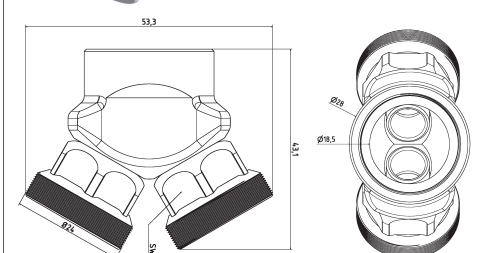
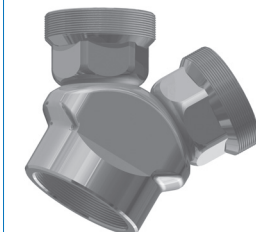
### 2-WV-3K

Kreuz-Stück  
cross piece



### 2-WV-4K

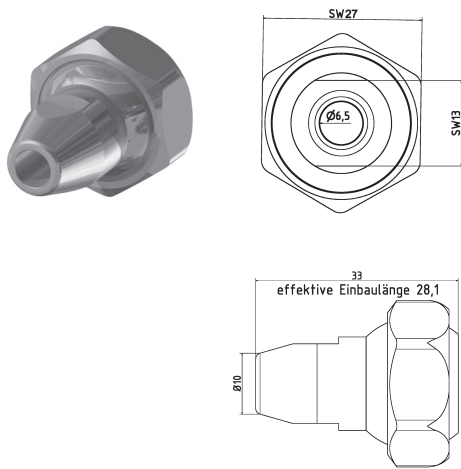
Stern-Stück  
star piece



### 2-YV

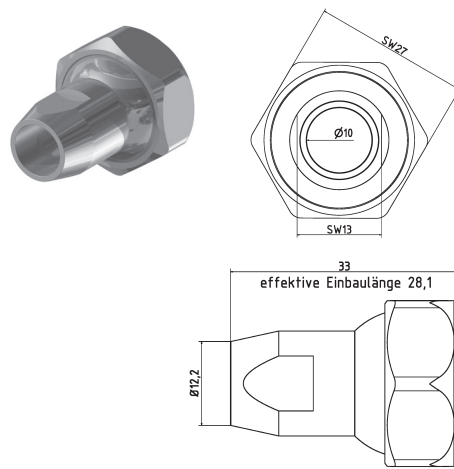
Y-Stück 50°  
Y-piece 50°

## Düsen / Nozzles



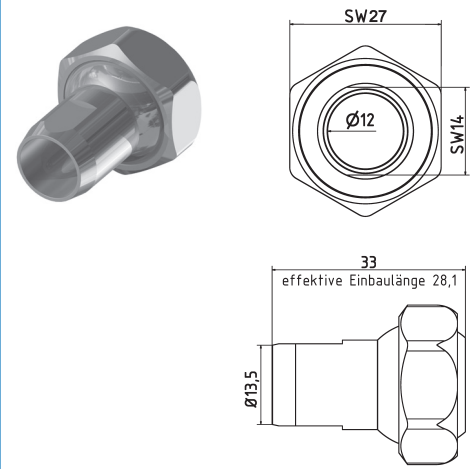
### 2-DU-65

Düse gerade Bohrung  $\varnothing 6,5$  mm  
nozzle straight  $\varnothing 6,5$  mm



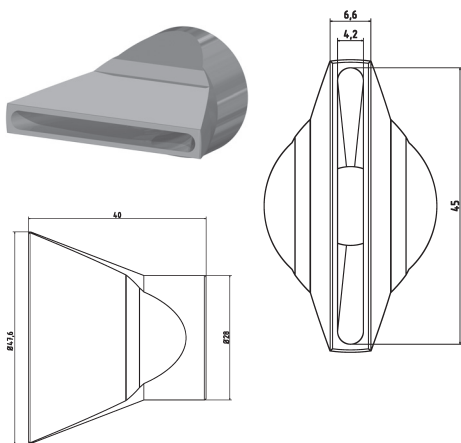
### 2-DU-10

Düse gerade Bohrung  $\varnothing 10$  mm  
nozzle straight  $\varnothing 10$  mm



### 2-DU-12

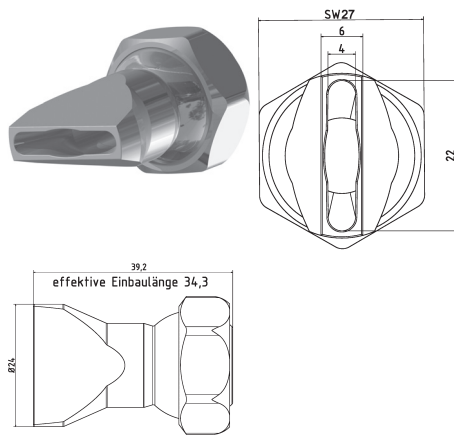
Düse gerade Bohrung  $\varnothing 12$  mm  
nozzle straight  $\varnothing 12$  mm



### 2-DU-SL-50

Flachdüse Schlitzbreite 45x4,2 mm  
Streustrahl

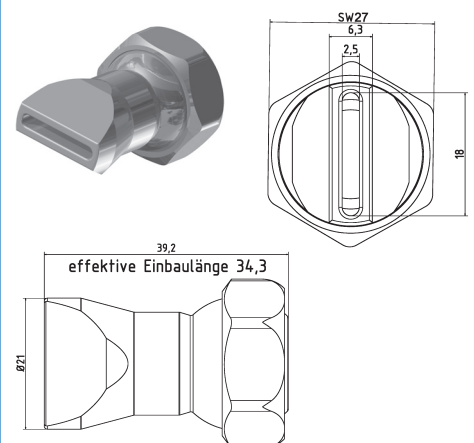
flat nozzle broadly with slit 45x4,2 mm  
scattered beam



### 2-DU-SL-25

Flachdüse Schlitzbreite 22x4,0 mm  
Streustrahl

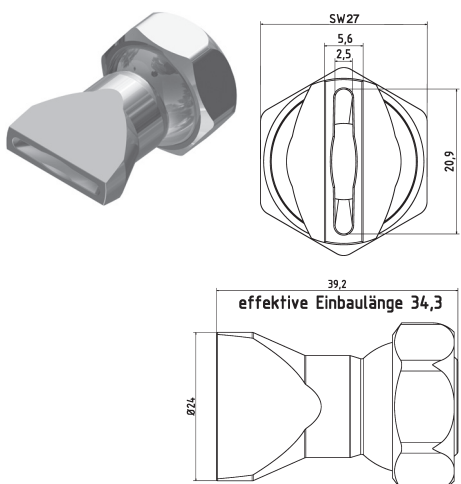
flat nozzle broadly with slit 22x4,0 mm  
scattered beam



### 2-DU-SL-25-GS

Flachdüse Schlitzbreite 18x2,5 mm  
gerader Strahl

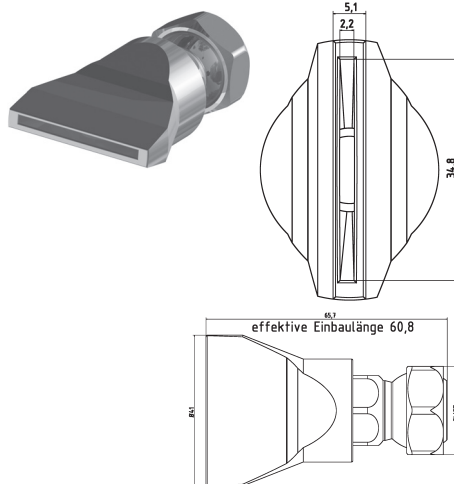
flat nozzle broadly with slit 18x2,5 mm  
straight jet



### 2-DU-SL-25-SS

Flachdüse Schlitzbreite 20x2,5 mm  
Streustrahl

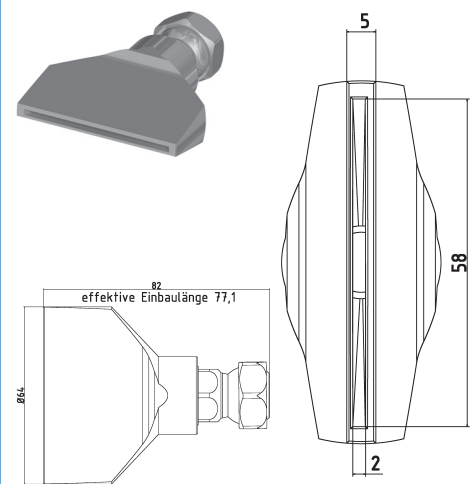
flat nozzle broadly with slit 20x2,5 mm  
scattered beam



### 2-DU-SL-50-GS

Flachdüse Schlitzbreite 35x2,2 mm  
gerader Strahl

flat nozzle broadly with slit 35x2,2 mm  
straight jet

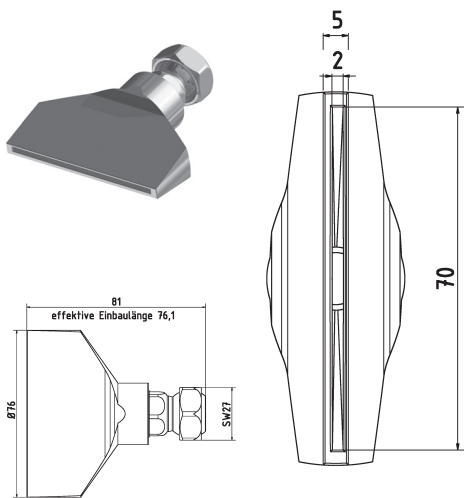


### 2-DU-SL-65-GS

Flachdüse Schlitzbreite 58x2,0 mm  
gerader Strahl

flat nozzle broadly with slit 58x2,0 mm  
straight jet

## Düsen / Nozzles

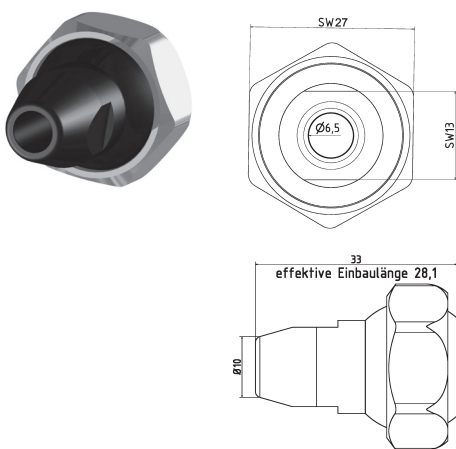


### 2-DU-SL-76-GS

Flachdüse Schlitzbreite 70x2,0 mm  
gerader Strahl

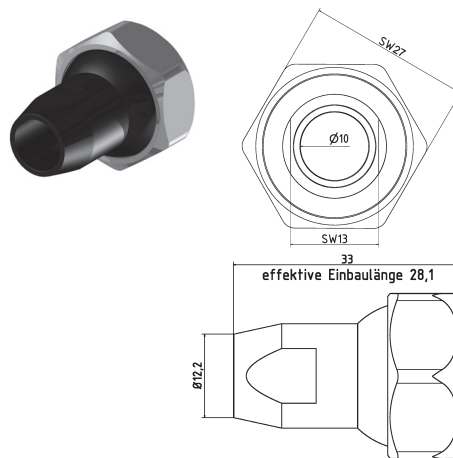
*flat nozzle broadly with slit 70x2,0 mm  
straight jet*

## Kunststoff-Düsen / Plastic Nozzles



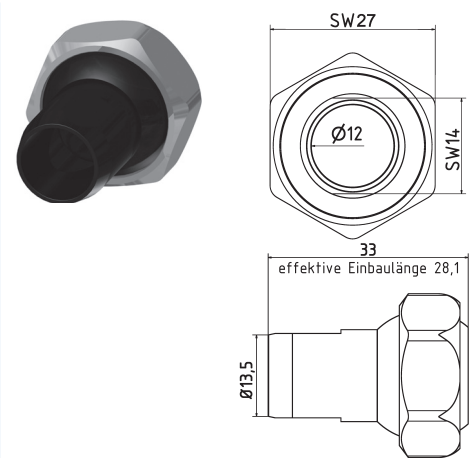
### KU-2-DU-65

Kunststoff-Düse gerade Bohrung Ø 6,5 mm  
*plastic nozzle straight Ø 6,5 mm*



### KU-2-DU-10

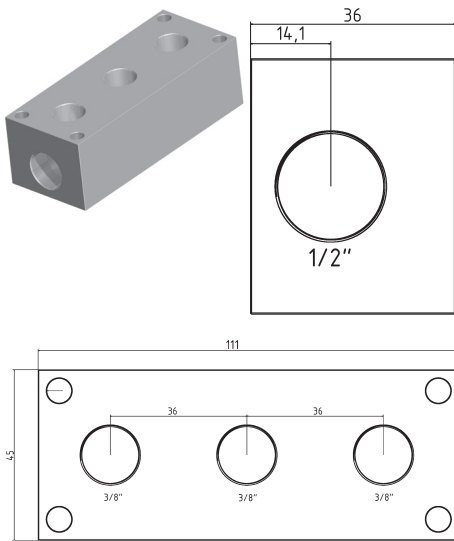
Kunststoff-Düse gerade Bohrung Ø 10 mm  
*plastic nozzle straight Ø 10 mm*



### KU-2-DU-12

Kunststoff-Düse gerade Bohrung Ø 12 mm  
*plastic nozzle straight Ø 12 mm*

## Zubehör / Accessories

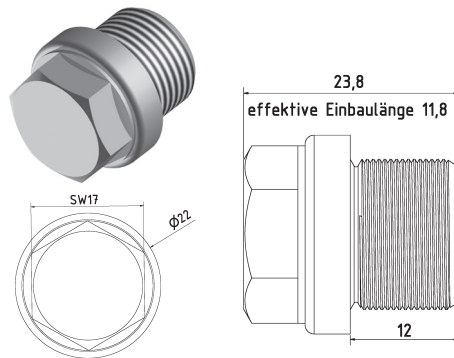


### VB-3-38

Verteilerblock Eingang Stirnseite G1/2"  
manifold block entrance front end 1/2"

### VB-3-38-PT

Verteilerblock Eingang Stirnseite G1/2" PT  
manifold block entrance front end 1/2" NPT

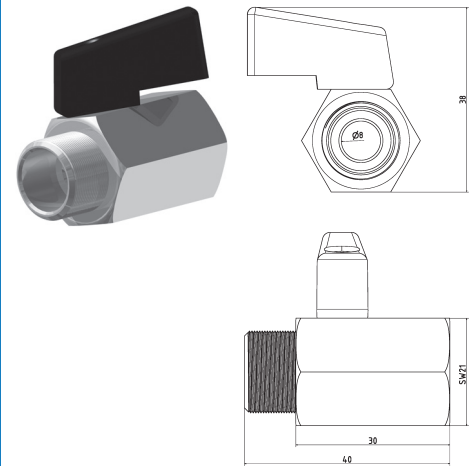


### VB-3-38-BS

Blindstopfen G3/8"  
blank plug with thread 3/8"

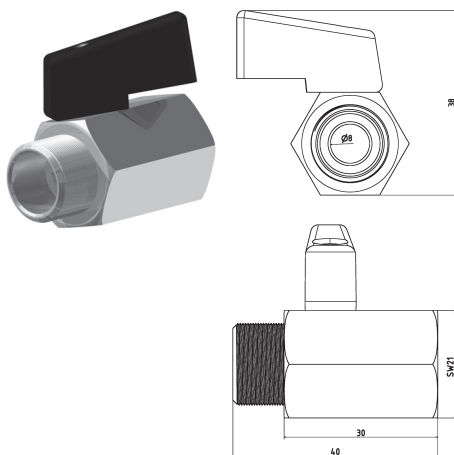
### VB-3-38-PT-BS

Blindstopfen mit G3/8" PT Gewinde  
blank plug with thread 3/8" NPT



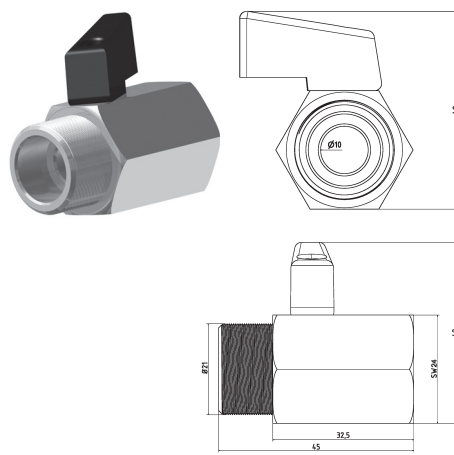
### KH-38

Mini-Kugelhahn G3/8" Messing Verchromt  
mini ball valve thread 3/8" brass chrome-plated



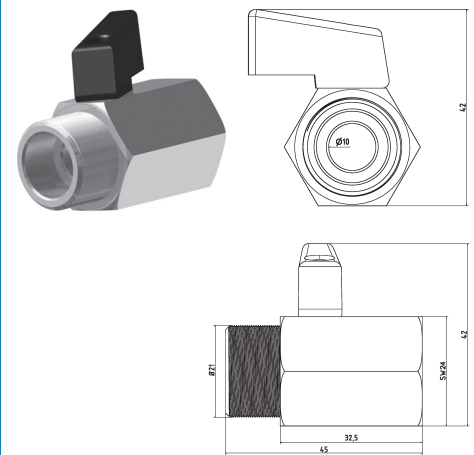
### KH-38-SS

Mini-Kugelhahn G3/8" Edelstahl  
mini ball valve thread 3/8" stainless steel



### KH-12

Mini-Kugelhahn G1/2" Messing Verchromt  
mini ball valve thread 1/2" brass chrome-plated



### KH-12-SS

Mini-Kugelhahn G1/2" Edelstahl  
mini ball valve thread 1/2" stainless steel



### SW-19

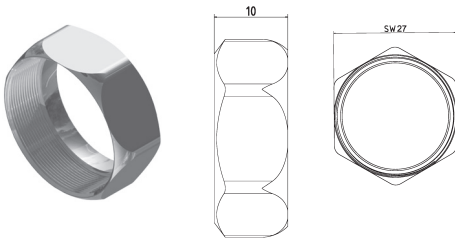
Schlüssel aus Stahl SW19  
open end wrench SW19



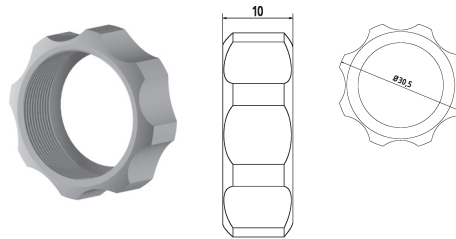
### SW-27

Schlüssel aus Stahl SW27  
open end wrench SW27

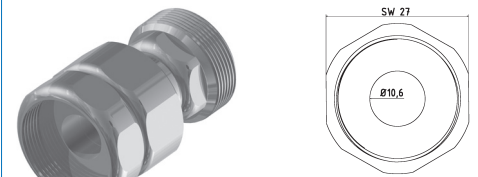
## Zubehör / Accessories



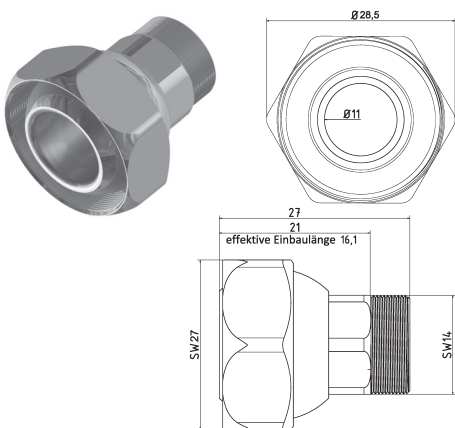
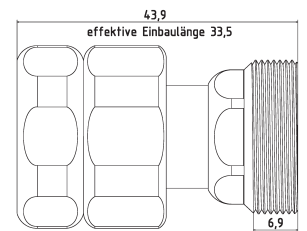
**2-MU**  
Mutter Standard  
screw nut (default)



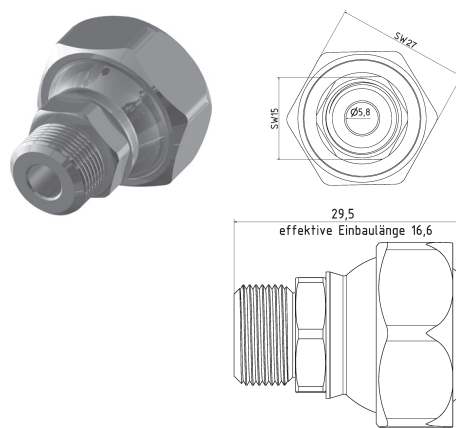
**2-MU-HA**  
Mutter für Handverstellung  
screw nut (hand feed)



**2-FP**  
Zwischenelement mit fester Position  
(Schnellkupplung)  
Intermediate element with fixed position  
(quick coupling)



**RE-2-1**  
Reduktion Typ 2 auf Typ 1  
reduction Typ 2 to Typ 1



**RE-2-G1/4**  
Reduktion Typ 2 auf G 1/4"  
reduction Typ 2 to G 1/4"

## Grundset / Basic Set

**2-GS**  
Grundset Typ2 1/2" System bestehend aus:  
basic set Typ2 1/2" system  $l=240$  mm  
5 x 2-GE, 1 x 2-GE-3, 1 x 2-AD-38,  
1 x 2-AD-12, 1 x 2-DU-65 1 x 2-DU-10,  
1 x SW-19, 1 x SW-27

